

CONTACT/RESOURCE INFORMATION

City of Beverly Hills contact information

- Recreation and Parks Department-
Urban Forest Division Office: (310) 285-2537
recreationandparks@beverlyhills.org
- Civil Engineering Department-
Administration Office: (310) 285-2506
civilengineering@beverlyhills.org
- Building and Safety Department-
Permit Desk: (310) 285-1141
buildingandsafety@beverlyhills.org

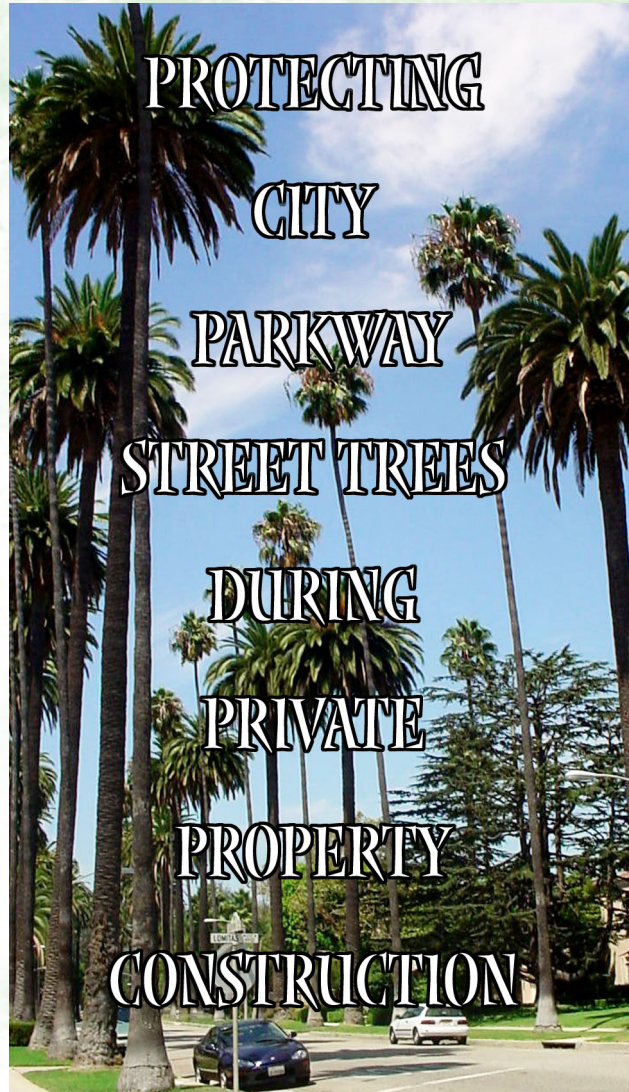
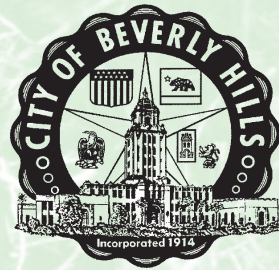
Determining the value of trees

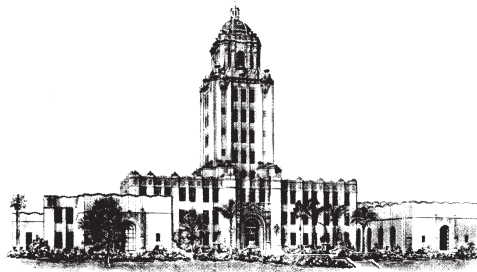
- Council of Tree and Landscape Appraisers
(CTLA), 2000. *Guide for Plant Appraisal*, 9th
Ed. Savoy, IL: ISA, 143 pp.
Order this reference guide online at:
<http://www.wcisa.net/pbItem.asp?PubID=30>

A library use only copy of this publication is
available in the reference section of:
The Beverly Hills Public Library
444 North Rexford Drive
Beverly Hills, CA 90210
(310) 288-2244

Find an International Society of Arboriculture (ISA) Certified Arborist

- Western Chapter ISA: (530) 892-1006
- ISA, find an Arborist by phone: (217) 355-9411
- ISA, find an Arborist online: <http://www.isa-arbor.com/arborists/arbsearch.html>





PROTECTING CITY PARKWAY STREET TREES DURING PRIVATE PROPERTY CONSTRUCTION

In addition to their numerous environmental benefits, trees in the parkway areas along the streets of Beverly Hills are a tremendous asset to residential and commercial communities. Street trees are protected by Beverly Hills Municipal Code (Sec. 5-6.1001) as follows: “It is illegal for parties who are not official representatives or authorized agents of the City of Beverly Hills to prune, remove, make attachment to, or otherwise damage a City street, park or protected tree.”

It is a violation of this City code to affix a sign, residence number plaque, mirror, light fixture, etc. to a City tree.

The maintenance and protection of street trees is a shared responsibility between property owners and the City of Beverly Hills. If you feel that a street tree is unhealthy, damaged or in need of pruning, please contact the Department of



Recreation and Parks Urban Forestry Division at 310.285.2537.

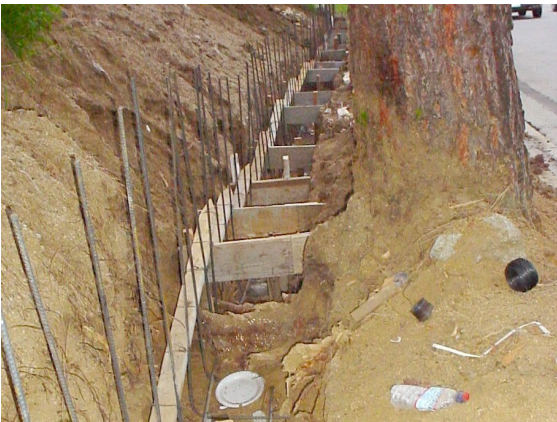
Construction activities can have severe and long lasting effects on the health of trees. Consideration must be given to street trees during a project’s planning stages. Tree loss or damage can have a significant effect on the uniformity and value of a tree canopy along a street. The planning and implementation of any construction project must include the preservation of this important City asset.

Planning and protecting the health of trees during construction is part of doing business in the City of Beverly Hills.

This brochure is provided to assist you to avoid endangering City trees during your construction project.

PROJECT PLANNING

- During the design process, please consider the long term effects that construction may have on City trees. Plan activities carefully, as the City of Beverly Hills will seek compensation for any damage to the trees caused by your construction activities.
- For any projects that include construction work in the public right-of-way, plans that accurately depict the public right-of-way will need the approval of the Departments of Recreation and Parks and Civil Engineering prior to any permits being issued by the Department of Building and Safety.
- All preliminary plans, sketches and drawings should identify all City parkway trees adjacent to the project site. The actual location and canopy diameter of City trees must be shown clearly on the plans.
- A City tree protection plan must be included in the initial plan submittal package. The tree protection plan may include a fenced tree protection zone, and must demonstrate how the parkway will be watered and maintained for the duration of the project. If it is determined that the proposed construction work will jeopardize the health of a street tree, or if the tree protection plan is deemed inadequate, you may be asked to provide a detailed report by a certified arborist showing the adequate protection of the tree and its value based on the International Society of Arboriculture (ISA) recognized standards.
- The negative effects of construction may take years to become apparent in the decline of trees. A claim may be filed with you and your general liability carrier should damage become apparent at a later date.
- You may wish to retain an International Society of Arboriculture (ISA) Certified Arborist to assist you with your project. Contact information is provided in this brochure.



Do not design projects at the expense of trees.

PROJECT APPROVAL

- All construction related permits will be processed by the Department of Building and Safety. Public Works permits are required for trucking, hauling and work conducted in the public right-of-way.
- The tree protection plan must be approved by the Recreation and Parks Urban Forest Division. If a tree protection zone fence is required, it must be installed and inspected prior to the commencement of any demolition or construction work. These inspections can be arranged by calling (310) 285-2537.



Maintain the tree protection zone fencing and parkway condition at all times.

SPECIFICATIONS

- A tree protection zone may require that the entire parkway be fenced. Fencing may be of a chain link or flexible configuration, but may not exceed 4 feet in height. Fence installation should be such that lines of sight are maintained so as to avoid any vehicle or pedestrian hazards. A warning sign must be displayed on the street side of the fence. The size of the sign must be no less than 8.5 x 11 inches. The sign must clearly state: "Warning: Tree Protection Zone". The sign shall clearly list the name and current contact information of the project owner or authorized representative.

DURING THE PROJECT

- Maintain the integrity of the tree protection zone fencing and keep the parkway site clean and maintained at all times.
- The site will be inspected by Building and Safety Department and the Urban Forest Division of the Recreation and Parks Department. If the tree protection plan is not complied with, or proves inadequate, additional measures may be required.
- It is recommended that trees be deep watered on a weekly basis for the duration of the project.



Do not allow cranes or other equipment to damage City trees.