

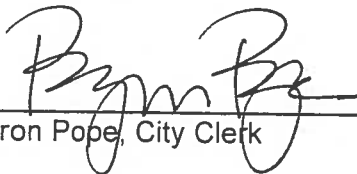


Beverly Hills City Council Liaison / Fine Art Commission Committee will conduct a Special Meeting, at the following time and place, and will address the agenda listed below:

**CITY HALL
455 North Rexford Drive
4th Floor Conference Room A
Monday, August 28, 2017
3:00 P.M.**

AGENDA

- 1) Public Comment
 - a. Members of the public will be given the opportunity to directly address the Committee on any item listed on the agenda.
- 2) Cultural Art Commission
- 3) Proposed donation of art piece by Marlene Louchheim
- 4) Bove update
- 5) Kusama update
- 6) Tom Friedman Commission
- 7) Public Art archive
- 8) Adjournment


Byron Pope, City Clerk

Posted: August 24, 2017

A DETAILED LIAISON AGENDA PACKET IS AVAILABLE FOR REVIEW IN THE LIBRARY AND CITY CLERK'S OFFICE.



In accordance with the Americans with Disabilities Act, Conference Room A is wheelchair accessible. If you need special assistance to attend this meeting, please call the City Manager's Office at (310) 285-1014 or TTY (310) 285-6881. Please notify the City Manager's Office at least twenty-four (24) hours prior to the meeting if you require captioning service so that reasonable arrangements can be made.



CITY OF BEVERLY HILLS
COMMUNITY SERVICES DEPARTMENT

MEMORANDUM

TO: Fine Art Council/Commission liaisons
FROM: Nancy Hunt-Coffey, Director of Community Services
DATE: August 30, 2017
SUBJECT: Cultural Art Commission

At the June 20 study session, based on the recommendation from Councilmember Mirisch, the City Council directed the creation of a cultural arts body for the City. The discussion centered around adding a cultural arts component to the Fine Art Commission's charge. There was also some discussion about creating a committee to take on this role. The liaisons are asked to provide feedback on the types of activities they would like to see the Commission or committee assume, and provide direction on the structure for these duties (Commission vs. committee). At the liaison meeting, staff will provide some preliminary research on other cities that have a cultural arts commission/committee.

Full of Nature

2003

42" x 64" x 50"
35" x 57" x 40"

*Recently installed in Century City
Los Angeles, California*

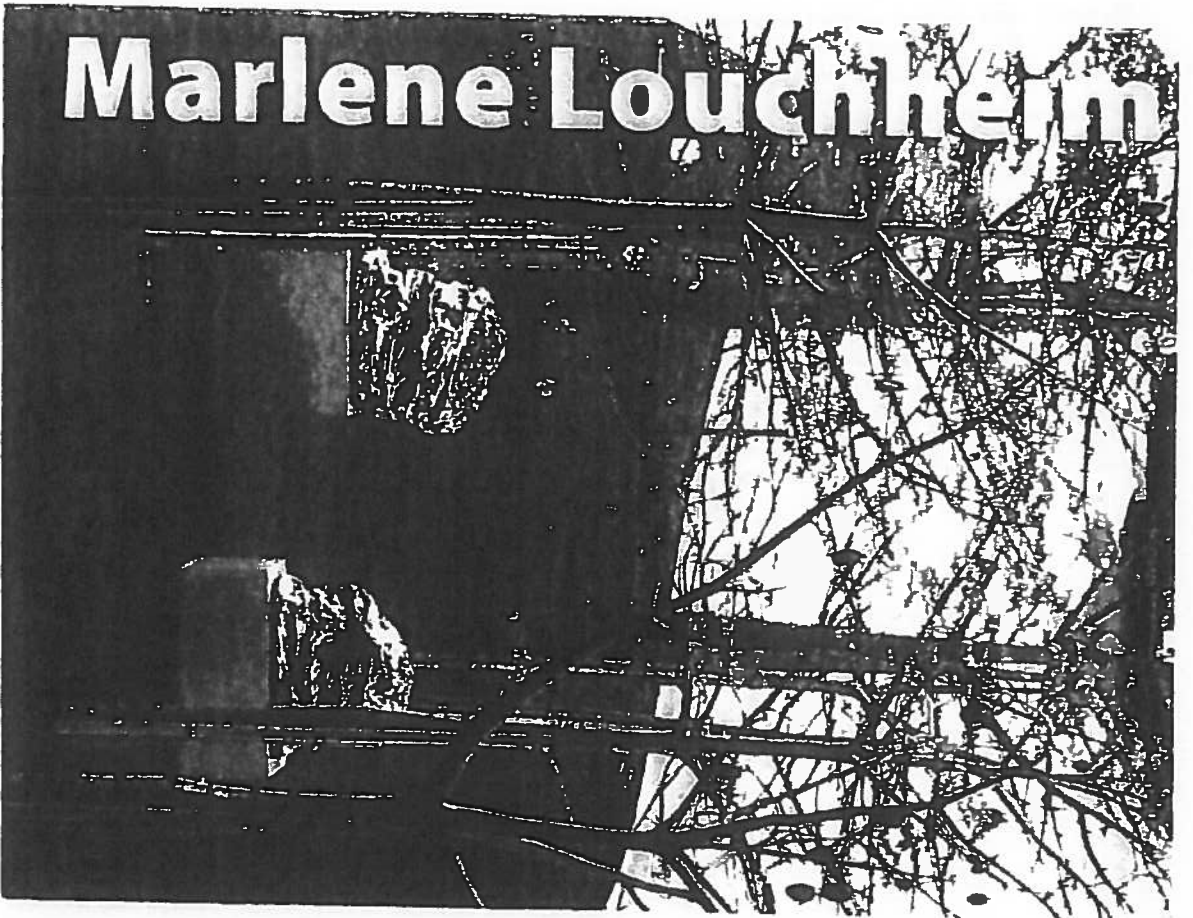


MARLENE LOUCHHEIM
STUDIOS

Los Angeles - 310.475.2953 Hawaii - 808.882.1881
www.louchheimstudio.com

Photo by Alan Shaffer • alanshaferphoto.com

Marlene Louchheim



(HTTPS://VIMEO.C

(HTTPS://TWITTER

(HTTPS://WWW.FA

ABOUT

"Your art collection is like a photo album, with each piece connecting you to a special place and time in your life. It's what led me Agency so I can connect artists and collectors through meaningful experiences—the kind only art can provide." --Tiffany DeEtte S

CART

No products in the cart.



BLOG

ARTISTS HAVE THE POWER ([HTTPS://TIFFANYSARTAGENCY.COM/ARTISTS-HAVE-THE-POWER/](https://tiffanysartagency.com/artists-have-the-power/))

WHAT'S WRONG WITH BEAUTY? ([HTTPS://TIFFANYSARTAGENCY.COM/WHATS-WRONG-WITH-BEAUTY/](https://tiffanysartagency.com/whats-wrong-with-beauty/))

FOR LOVE OF ART & THE ISLANDS ([HTTPS://TIFFANYSARTAGENCY.COM/FOR-LOVE-OF-ART-THE-ISLANDS/](https://tiffanysartagency.com/for-love-of-art-the-islands/))

CONVERSING WITH ART ([HTTPS://TIFFANYSARTAGENCY.COM/CONVERSING-WITH-ART/](https://tiffanysartagency.com/conversing-with-art/))

ABOUT THE HAWAII'S MASTER ARTISTS SERIES ([HTTPS://TIFFANYSARTAGENCY.COM/ABOUT-THE-HAWAIIIS-MASTER-ARTISTS-S](https://tiffanysartagency.com/about-the-hawaiis-master-artists-s))

PLACE ART TO SCALE ON YOUR WALLS

DOWNLOAD THE FREE APP

([HTTPS://TIFFANYSARTAGENCY.COM/PRODUCT-CATEGORY/WOOD/](https://TIFFANYSARTAGENCY.COM/PRODUCT-CATEGORY/WOOD/))

\$ 9,900

ADD TO CART (/PRODUCT-CATEGORY/MARLENE-LOUCHHEIM/?ADD-TO-CART=1539)

(<https://tiffanysartagency.com/product/images-of-nature-by-marlene-louchheim/>)

(<https://tiffanysartagency.com/product/images-of-nature-by-marlene-louchheim/>)



(<https://tiffanysartagency.com/product/images-of-nature-by-marlene-louchheim/>)

IMAGES OF NATURE BY MARLENE LOUCHHEIM

([HTTPS://TIFFANYSARTAGENCY.COM/PRODUCT/IMAGES-OF-NATURE-BY-MARLENE-LOUCHHEIM/](https://TIFFANYSARTAGENCY.COM/PRODUCT/IMAGES-OF-NATURE-BY-MARLENE-LOUCHHEIM/))

MARLENE LOUCHHEIM

([HTTPS://TIFFANYSARTAGENCY.COM/PRODUCT-CATEGORY/MARLENE-LOUCHHEIM/](https://TIFFANYSARTAGENCY.COM/PRODUCT-CATEGORY/MARLENE-LOUCHHEIM/)), MIXED-MEDIA

([HTTPS://TIFFANYSARTAGENCY.COM/PRODUCT-CATEGORY/MIXED-MEDIA/](https://TIFFANYSARTAGENCY.COM/PRODUCT-CATEGORY/MIXED-MEDIA/)), SCULPTURE

([HTTPS://TIFFANYSARTAGENCY.COM/PRODUCT-CATEGORY/SCULPTURE/](https://TIFFANYSARTAGENCY.COM/PRODUCT-CATEGORY/SCULPTURE/)), WOOD

([HTTPS://TIFFANYSARTAGENCY.COM/PRODUCT-CATEGORY/WOOD/](https://TIFFANYSARTAGENCY.COM/PRODUCT-CATEGORY/WOOD/))

\$ 7,500

ADD TO CART (, PRODUCT-CATEGORY/MARLENE-LOUCHHEIM/?ADD-TO-CART=1541)

BOOKS

([HTTPS://TIFFANYSARTAGENCY.COM/PRODUCT-CATEGORY/BOOKS/](https://TIFFANYSARTAGENCY.COM/PRODUCT-CATEGORY/BOOKS/)), MARLENE LOUCHHEIM

([HTTPS://TIFFANYSARTAGENCY.COM/PRODUCT-CATEGORY/MARLENE-LOUCHHEIM/](https://TIFFANYSARTAGENCY.COM/PRODUCT-CATEGORY/MARLENE-LOUCHHEIM/))

\$ 85

ADD TO CART (/PRODUCT-CATEGORY/MARLENE-LOUCHHEIM/?ADD-TO-CART=1177)

(<https://tiffanysartagency.com/product/lava-supreme-by-marlene-louchheim/>)

(<https://tiffanysartagency.com/product/lava-supreme-by-marlene-louchheim/>)



(<https://tiffanysartagency.com/product/lava-supreme-by-marlene-louchheim/>)

LAVA SUPREME BY MARLENE LOUCHHEIM

([HTTPS://TIFFANYSARTAGENCY.COM/PRODUCT/LAVA-SUPREME-BY-MARLENE-LOUCHHEIM/](https://TIFFANYSARTAGENCY.COM/PRODUCT/LAVA-SUPREME-BY-MARLENE-LOUCHHEIM/))

MARLENE LOUCHHEIM

([HTTPS://TIFFANYSARTAGENCY.COM/PRODUCT-CATEGORY/MARLENE-LOUCHHEIM/](https://TIFFANYSARTAGENCY.COM/PRODUCT-CATEGORY/MARLENE-LOUCHHEIM/)), MIXED-MEDIA

([HTTPS://TIFFANYSARTAGENCY.COM/PRODUCT-CATEGORY/MIXED-MEDIA/](https://TIFFANYSARTAGENCY.COM/PRODUCT-CATEGORY/MIXED-MEDIA/)), SCULPTURE

([HTTPS://TIFFANYSARTAGENCY.COM/PRODUCT-CATEGORY/SCULPTURE/](https://TIFFANYSARTAGENCY.COM/PRODUCT-CATEGORY/SCULPTURE/)), WOOD

([HTTPS://TIFFANYSARTAGENCY.COM/PRODUCT-CATEGORY/WOOD/](https://TIFFANYSARTAGENCY.COM/PRODUCT-CATEGORY/WOOD/))

\$ 11,000

Katherine Cone Gallery – Los Angeles – July & August 2012
Carl Schlosberg Fine Art – 40th Anniversary – Los Angeles – 2012
Jean Marc Fray Antiques – New York Design Center – 2011
Four Season Resort Hotel – Kona, Hawaii – 2011
Holualoa Foundation for Art and Culture – November 2010
Malibu Sculpture 2010 – July & August 2010
Material Boundaries at Spazio Interiors in Austin, Texas – March 2009
Art Matters at the Huntington Library in San Marino, CA – May 2008
California in New York at the Hubert Gallery in New York – May 2008
Carl Schlosberg Fine Arts 35th Anniversary Exhibition –
. . . Penninsula Hotel – October 2007
Carl Schlosberg Fine Arts – Penninsula Hotel – January 2006
Carl Schlosberg Fine Arts – Malibu – Summer 2005
The College of the Desert: A Retrospective – February 2005
Carl Schlosberg Fine Arts – Malibu – October 2003
Carl Schlosberg Fine Arts – Malibu – October 2002
Orange Country Museum of Art – Orange County – September 1998
Helms Building in Cluver City, CA – 1997 to present
Seven Sanctuaries Gallery – 1996
Juried Show Palm Springs Desert Museum-Palm Springs -1996
Western Savings Bank on Main Street-Los Altos -1994-1996
International Sculpture Exhibition – Malibu – June 1993
Graphic Arts Council-February 1993
Los Angeles County Museum of Art – Los Angeles – October 1992
Trumps Restaurant – Los Angeles – June 1992
Manulife Building – Los Angeles – February 1992
College of the Desert – Rancho Mirage – February 1992
Pepi Jewelers – Beverly Hills – September 1991
427 N. Camden Drive Building-Beverly Hills-Installed September 1991
Walter N. Marks Building – Beverly Hills – September 1991
Carl Schlosberg Fine Arts – Malibu – June 1991
Westwood Place Building – Los Angeles – April 1991
Tivol and Company – Kansas City – December 1990
Carl Schlosberg Fine Arts – New York – May 1991
Elaine Horwitch Gallery – Palm Springs – January 1989
Carl Schlosberg Fine Arts – Los Angeles- December 1988
Carl Schlosberg Fine Arts – Los Angeles – November 1988

Search



Curating contemporary art experiences in Hawai'i.
Original Works • Concierge Art Services • Exclusive Events
(<https://tiffanysartagency.com>)

([HTTPS://TIFFANYSARTAGENCY.COM](https://TIFFANYSARTAGENCY.COM))



HOME

ABOUT

SERVICES

ARTISTS

SHOP

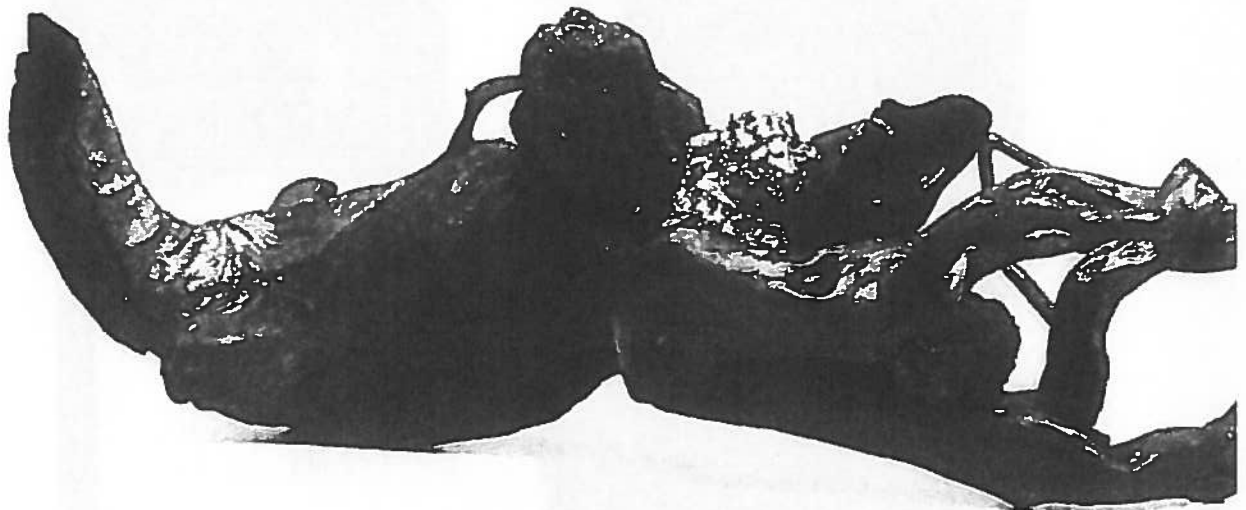
SHOWS & EVENTS

BL

MARLENE LOUCHHEIM



HOME ([HTTPS://TIFFANYSARTAGENCY.COM](https://TIFFANYSARTAGENCY.COM)) / PROJECTS ([HTTPS://TIFFANYSARTAGENCY.COM/FEATURED-LOUCHHEIM](https://TIFFANYSARTAGENCY.COM/FEATURED-LOUCHHEIM))





Louchheim wanted to find a permanent home for the piece at a Jewish institution where, as a symbolic representation of her brother's outsized commitment to social justice, it could be an inspiration to young people.

"That's why it's so big," she said.

The sculpture will be installed behind the sanctuary along the path to Micah's memorial garden and cemetery and will be visible through the sanctuary window.

"We are honored and grateful to make a home for Filled with Commitment at Micah," said Rabbi Laurie Rice. "Marlene Louchheim is such an accomplished artist. Her generosity is astounding. We hope the piece continues to inspire our members for years to come." •



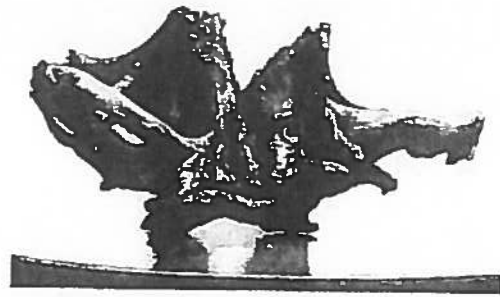
Exhibitions & Signings

You may have already seen my work in some of these Exhibitions:

Century City Sculpture 2015 – March 2015 to 2016
 Hawaii Wood Guild 28th Annual Show – Isaacs Art Center –
 . . . Kamuela, HI – January & February 2014
 Big Island Glass Gallery Honokaa, HI – 2012 to present
 Hebrew Union College – Jewish Institute of Religion – Los Angeles – 2012 -2013
 Katherine Cone Gallery – Los Angeles – July & August 2012
 Carl Schlosberg Fine Art – 40th Anniversary – Los Angeles – 2012
 Jean Marc Fray Antiques – New York Design Center – 2011
 Four Season Resort Hotel – Kona, Hawaii – 2011
 Holualoa Foundation for Art and Culture – November 2010
 Malibu Sculpture 2010 – July & August 2010
 Material Boundaries at Spazio Interiors in Austin, Texas – March 2009
 Art Matters at the Huntington Library in San Marino, CA – May 2008
 California in New York at the Hubert Gallery in New York – May 2008
 Carl Schlosberg Fine Arts 35th Anniversary Exhibition
 . . . Peninsula Hotel – October 2007
 Carl Schlosberg Fine Arts – Peninsula Hotel – January 2006
 Carl Schlosberg Fine Arts – Malibu – Summer 2005
 The College of the Desert: A Retrospective – February 2005
 Carl Schlosberg Fine Arts – Malibu – October 2003
 Carl Schlosberg Fine Arts – Malibu – October 2002
 Orange County Museum of Art – Orange County – September 1998
 Helms Building in Claver City, CA – 1997 to present
 Seven Sanctuaries Gallery – 1996
 Juried Show Palm Springs Desert Museum-Palm Springs -1995
 Western Savings Bank on Main Street-Los Altos -1994-1995
 International Sculpture Exhibition – Malibu – June 1993
 Graphic Arts Council-February 1993
 Los Angeles County Museum of Art – Los Angeles – October 1992



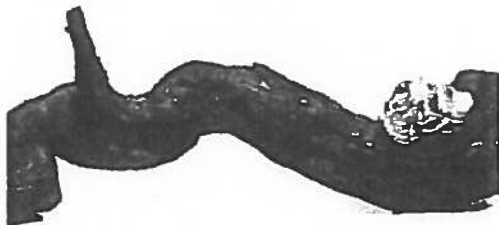
Work in Progress



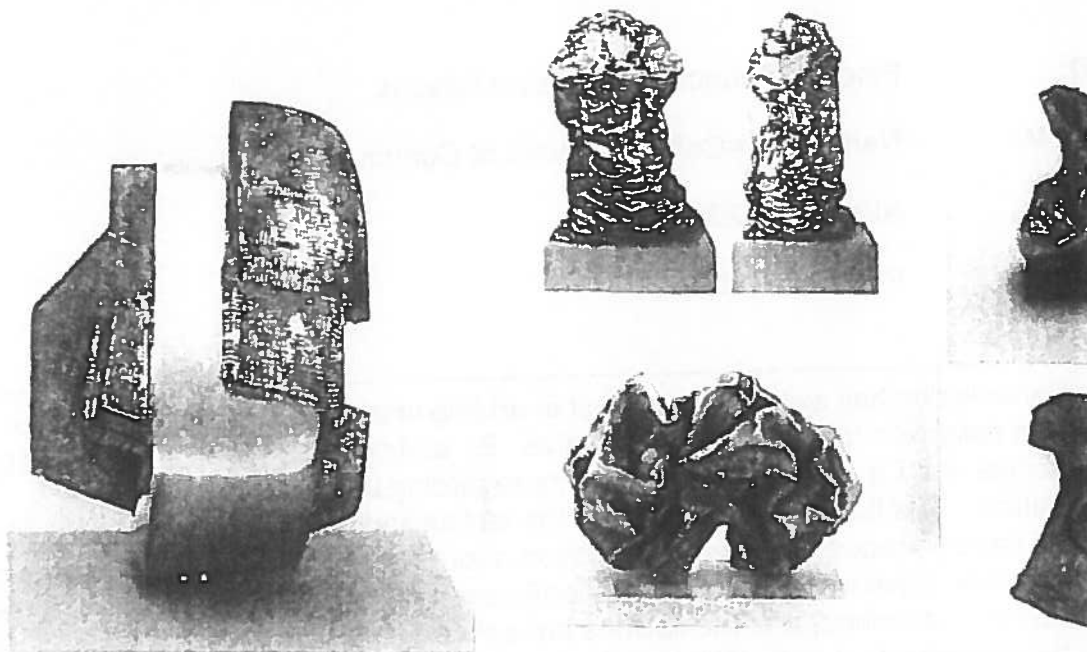
Ichiban Ohia #1



Ohia #2



Ohia #4



Content Submission Agreement

Content Submission Agreement

Public Art Archive™

Last Updated 06-01-2017

Welcome to the Public Art Archive™!

Thank you for using the Public Art Archive™ service (PAA or Archive) as a way of presenting your public art to a worldwide audience. The Archive is provided by WESTAF, a Colorado nonprofit corporation, which is located at 1743 Wazee Street, Suite 300, Denver, CO 80202, United States (WESTAF). The Archive is presently published online at <http://www.publicartarchive.org>.

Your submission, including past submissions, of content to WESTAF for inclusion in the Archive will indicate your assent to all of the terms and conditions of this agreement between you and WESTAF. Please read this agreement carefully if you intend to submit content to WESTAF.

Definitions

The following definitions apply to terms used in this Agreement:

"Agreement" means this Content Submission Agreement, WESTAF's General Terms of Service (published at <http://www.westaf.org/termsandconditions.html>) and Privacy Policy (published at <http://www.westaf.org/privacy.html>) and the Specific Terms of Use for WESTAF's Public Art Archive™ Service (the "Specific Terms of Use") (published at <http://www.publicartarchive.org/content/terms-use>).

"Archive Partners" are partners that enter into an agreement with WESTAF for use of Archive content for educational purposes.

"Artwork" means any work of art, including, but not limited to, pictorial, graphic, sculptural and other works of visual art, that are depicted in or are otherwise the subject of content.

"Content" means images, text, files, drawings, graphics, illustrations, articles, information, data, maps, audio, video, photographs, and other materials depicting, describing or otherwise relating to a work of art, the creation or commission of works of art or artists as the creators of works of art.

"You" and "your" means the person submitting content to WESTAF, except if that person is acting on behalf of another person or entity, it refers to that other person or entity.

Submission of Content

By submitting content to the PAA, you agree to the following:

You are the copyright holder of the content or have permission of the copyright holder of the content to authorize it to be included in and published as part of the Archive under the terms of this agreement.

You have accurately and completely provided WESTAF with the name and a valid URL address of the person who is the copyright holder of the content and artwork.

television and those media and technologies now existing or later devised (and, if published on the Internet or analogous future media, on both restricted and unrestricted websites and locations and on websites of web-indexing services and in other electronic media to improve search results and functionality); and to sublicense all of the foregoing rights.

The rights granted under the license allow the following uses of content:

to create, maintain, publish, and distribute, in whole or in part and in any form, an archive of public art for educational purposes and all uses incidental to the foregoing, including uses by the general public;

to display, publish, and distribute content and Thumbnail Images to promote any licensed use of the content, including, but not limited to, promoting the Archive;

any other use for educational purposes; and

any use by Archive Partners that is limited to educational purposes.

Submissions

You agree that all content will be submitted electronically, including via email. You agree that WESTAF may retain the content, and you release WESTAF from any and all liability for any loss or damage thereto, regardless of cause. If the content, artwork, or any elements of the content or artwork are not original, novel, or valuable or are not copyrightable, or are in the public domain, then WESTAF has the right to use such content, artwork, or any such elements, notwithstanding the terms and conditions of this agreement. You may not provide WESTAF with any of the following materials:

Any threatening, hateful, obscene, defamatory or any other material that could give rise to any civil or criminal liability under applicable law;

Any material that is harmful to minors in any way;

Any material that infringes rights of privacy or copyrights if copied, published, performed, or otherwise used without the permission of the owner of those rights; and

Any material sent from an anonymous or false address or with a false header or that is harmful to the Archive's coding, storage, servers and other infrastructure or facilities.

Security

WESTAF does not promise any particular level of security with respect to any electronic publication of your content, except that your content will be afforded the same level of security as is all content published as part of the Archive. You release WESTAF from all claims related to any third-party infringement or misappropriation of the content you submit to WESTAF.

Governing Law and Venue

If you are not a governmental or quasi-governmental entity, then:

This agreement will be governed by and interpreted in accordance with the laws of the State of Colorado, without reference to its choice of laws rules;

Any action or proceeding arising from or relating to this agreement shall be brought in a federal or state court in Denver, Colorado, and each party irrevocably submits to the jurisdiction and venue of any such court in any such action or proceeding; and

If any legal action is brought by a party to this agreement to interpret or enforce this agreement, then the court shall award the prevailing party in such action its reasonable attorneys' fees and related costs, in addition to any other relief it may receive.

- * You have accurately and completely provided WESTAF with the name and a valid URL address of the person who is the copyright holder of the content and artwork.
- * You understand that all content submitted for inclusion is vetted and yours may not be published if it does not fit the Archive's criteria for publication or for other reasons determined by WESTAF.
- * WESTAF and Public Art Archive management know that WESTAF does not own the content that is submitted to the Archive and understand that the owner of the content retains all copyrights.
- * WESTAF claims the right of fair use and does not waive any rights it may have or acquire with respect to the artwork depicted in content submitted. WESTAF also claims all copyrights in the Archive other than the copyrights in submitted content and artwork and is the owner of and sole curator of the Archive.
- * At the request of WESTAF, you agree to use your reasonable efforts to obtain written permissions from the holders of any rights or underlying rights to or in your content, including the images, in a manner consistent with the terms and license of this agreement. The form of such permissions will be subject to WESTAF's advance approval. You shall promptly furnish WESTAF with copies of all signed and executed permissions forms.
- * You are granting WESTAF the rights to use the content as set forth in the "License Rights" section of this agreement.
- * This agreement is between you and WESTAF and cannot be transferred by you to anyone else. WESTAF may transfer this agreement and its rights under it to any successor to its business in the Archive. The profile or account created by you for the Archive is to be used by you and no one else. Any edits or changes to this agreement need to be made in writing and accepted by you and WESTAF.

Educational Purposes

The purpose of the Archive and the collection of the Archive's content is to develop, promote, and support the arts and culture through arts and culture education and instruction; art and culture scholarship, scholarly publication, and research; the preservation, archiving, and cataloguing of art and cultural artifacts; and publication of the Archive's content to enhance the public's use and understanding of and relationship with art and cultural artifacts (the "educational purposes").

License Rights

You grant to WESTAF a non-exclusive, limited, perpetual, irrevocable, worldwide, free of all charges, transferable license to use your content for educational purposes on the terms set forth in this "License Rights" section (the "license"). The rights granted under the license are:

- * to copy, publish, publicly perform, publicly display, and distribute the content;
- * to adapt, modify and translate content and to create derivative works of content: (i) consisting of images for formatting and interface purposes, including for incorporating small-sized images along with related cataloging and texts ("Thumbnail Images") and then to publish, publicly perform, publicly display, and distribute such Thumbnail Images; and (ii) so that the content meets publication criteria and to otherwise comply with standard image resolutions, standard nomenclature, and other technical standards to maximize search efficiency and data compatibility across databases;
- * to store, transmit, and distribute the content on servers and over various public networks and in various media and to make such changes to images and other content as are necessary to conform and adapt them to the technical requirements of connecting networks, devices, services or media;
- * to do any of the foregoing in any form, medium, size, format or resolution, including, but not limited to, electronic, Internet, wireless, print, video, film and television and those media and technologies now existing or later devised (and, if published on the Internet or analogous future media, on both restricted and unrestricted websites and locations and on websites of web-indexing services and in other electronic media to

This agreement shall be governed by and interpreted in accordance with the laws of the state in which you are located without reference to its choice of laws rules;

Any action or proceeding arising from or relating to this agreement shall be brought only in the state courts of such state in the judicial district in which you are located under your laws and each party irrevocably submits to the jurisdiction and venue of any such court in any such action or proceeding; and

If any legal action is brought by a party to this agreement to interpret or enforce this agreement, then the court shall award the prevailing party in such action its reasonable attorneys' fees and related costs, in addition to any other relief it may receive.

Follow Us

ARCHIVE

Once your collection is included in the database, you can choose to purchase a Showcase for your collection. Read on for details.

Instant web presence

Give your collection an online presence without wasting thousands of dollars on development, hosting, and maintaining your own website or mobile app.

Premier visibility

Provide your program and collection increased visibility in a growing database of public artworks. Each of your artworks in the PAA will link back to your showcase page.

Easy and intuitive

Help visitors to your region easily search and explore your collection within the database.

Flexible and customizable

Update the text on your showcase page on-the-fly with messages tailored to exactly what you are promoting.

Branding

Reinforce or develop your brand. Include your logo and contact information so that site visitors can reach you.

Multimedia options

Include multimedia files for site visitors to download, play in the page, or link to outside of the database. Provide printable maps, calls for entry, press releases for tourists and artists alike. With a showcase page, you no longer need to fight your IT department for more server space to add images, soundtracks and videos of your collection.

Centralized information

Because the showcase pulls images from records that are already in the PAA, you won't need to manage information and images in multiple places.

Mutual support

Gain access to WESTAF support to customize your showcase page, learn how to promote it in social media platforms and email marketing campaigns, and receive periodic reports about traffic to your page.

Join at the showcase level today and start using it today. Email us at PAArchive@westaf.org.

- PAA raises awareness about the value of public art and advocates for public artists.
- PAA helps make it possible for stakeholders to advance the professionalism of public artists and practitioners in allied fields.

The Public Art Archive is unlike any other resource of its kind. Here's why:

- Totally **free** to contribute to and interact with from your desktop, tablet or mobile device.
- Managed by a team of curators, public art administrators, information specialists, web developers, graphic designers, and arts advocates.
- A program supported by a 40-year old nonprofit arts service organization, the Western States Arts Federation (WESTAF). Learn more at www.westaf.org.
- Currently home to almost 12,000 artworks, representing over 1,000 collections, with over 30,000 images.
- Every copyright holder retains their rights for any data and media that the Archive displays. WESTAF retains copyright over the compilation that is the Public Art Archive™ service.
- Built on a standardized and highly rigorous metadata structure and controlled taxonomies to describe artworks in a consistent manner. *Providing accurate documentation is a main goal of this database.*
- Integrated with Google Maps, which allows for advanced mapping features for virtual or on foot exploration.
- Searchable with filters that aid in research and education.

- Sanctioned artworks commissioned, placed, or displayed through a **commissioning process** or acquired through an **official acquisition process**.

Beyond that, there are **no requirements** regarding the following criteria:

- Worktype
- Duration
- Funding or ownership

What is Public Art?

WESTAF Public Art Archive Map © Kenny Be



While there are many existing definitions of public art, the following guidelines, from *The Practice of Public Art*, by Cameron Cartiere and Shelly Willis (Cartiere, Cameron and Shelly Willis, ed. *The Practice of Public Art*. Routledge, 2008, p.15) is the standard definition that PAA uses to determine if the artwork fits the criteria.

Public art is art outside of museums and galleries and must fit within at least one of the following categories:

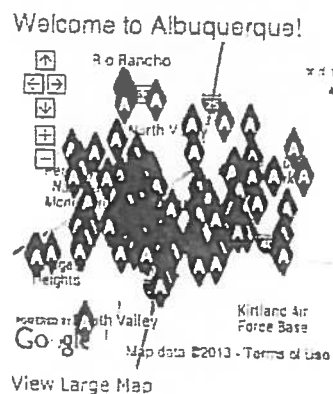
- *in public*: in a place accessible or visible to the public
- *public interest*: concerned with or affecting the community or individuals

AUTOMATED FEATURES

INTERNAL LINKS

COLLECTION MAP

COLLECTION-FOCUSED SEARCHING



Search by



Search by
Collection
Search by
Search by



Search

SEARCH RESULTS



Search Results

Albuquerque Public Art

Albuquerque Public Art

Albuquerque Public Art

Albuquerque Public Art

Albuquerque Public Art

Results



Agency
Type
Date
Archived

(c) Albuquerque Public Art
Copyright reserved. All rights reserved.

WESTAF

Stay Up-to-Date.

Join the PAA mailing list.

Follow @PAArchive on Twitter, "like" the Facebook page, and follow our Tumblr Blog.

Connect to PAA Mobile™.

Find public art near you on the go with PAA Mobile. Take a virtual tour, learn more about the artwork you see every day, and experience public art while you're on the move, for free!

PAA Mobile



Art in Public Places, City of Austin, TX (247)
Art in Stark and Football Hall of Fame (1)
Art in the Avenues (1)
Art in the Center, Inc. (1)
Art Institute of Chicago (3)
Art on the Atlanta BeltLine (4)
Art Rotterdam (1)
Art Sandy Springs (1)
Art Spaces, Inc. - Wabash Valley Outdoor Sculpture Collection (12)
Art Works Downtown (1)
ArtBox Project SJ (1)
Arte Luise Kunsthôtel (1)
Artisan's Plaza II Homeowners Association (1)
Artist-sponsored (36)
Artpark & Company, Inc. (1)
Arts & Science Council Public Art Program (37)
Arts & Venues Denver: Public Art Program (243)
Arts and Cultural Affairs Commission, City of West Hollywood (3)
Arts at the Airport (1)
Arts Commission of Greater Toledo (1)
Arts Council for Long Beach (4)
Arts Council for Monterey County (1)
Arts Council of Brazos Valley (1)
Arts Council of Indianapolis (1)
Arts Council of New Orleans (3)
ArtsinStark (1)
ArtsWestchester (1)
ARTWalk, Rochester, NY (1)
Asheville Public Art Collection (44)
Asian Counseling and Referral Service (ACRS) (1)
AT&T (2)
Atatürk Society of America (ASA) (1)
Athens Cultural Affairs Commission (1)
Attitudinal Healing Connection (1)
Aurora Art in Public Places (3)
Austin Peay State University (1)
Avenue of the Arts Foundation (1)
Avonlea Station Apartment Homes (1)
Babel Lee Keramik Galerie (1)
Bainbridge Companies (1)
Bainbridge Island Arts & Humanities Council (2)
Baker Botts, LLP (1)
Baldwin Hills Conservancy (1)
Bank of America (1)
Barrio Hollywood Neighborhood Association (1)
Basilica of San Albino (1)
BayCare Health System (1)

Castle Rock Police Department (2)
Castlegar Sculpturewalk (1)
Catellus Development Group (1)
Cathedral City Public Arts Commission (1)
CATS LYNX Blue Line Public Art (69)
Cattaraugus County Arts Council (1)
Center For The Arts Evergreen (1)
Central Area Development Association (1)
Central DuPage Hospital (1)
Central Ohio Transit Authority (1)
Central Oregon Community College (1)
CenturyLink Field, Stadium and Exhibition Center Art Program (1)
Cesar E. Chavez Commissioning Board (1)
Chabot College (1)
Champlain Regional College (1)
Chapel Hill, North Carolina, Public Art (59)
Charlotte-Mecklenburg Public Art (2)
Chase Field Ballpark (1)
Chashama (1)
Cherry Hill Township, NJ Public Art (1)
Chicago BT Property, LLC (1)
Chicago Loop Alliance (1)
Chicago Park District (3)
Chicago Transit Authority Arts in Transit Program (1)
Children's Hospitals and Clinics of Minnesota (1)
Children's Museum of Pittsburgh (1)
Christensen Holdings, LP (1)
City Creek Reserve Inc. (1)
City of Albuquerque, Open Space Program (1)
City of Alexandria (23)
City of American Canyon, CA (1)
City of Ann Arbor Public Art Commission (11)
City of Antioch (1)
City of Atlanta Office of Cultural Affairs (6)
City of Atlanta Percentage for the Arts (1)
City of Atlanta, Parks and Recreation (1)
City of Auburn (24)
City of Austin Watershed Protection (18)
City of Bay St. Louis (1)
City of Beaverton, Beaverton Arts Commission (3)
City of Bellevue (6)
City of Bellflower, CA (1)
City of Berkeley (1)
City of Bettendorf (4)
City of Birmingham (1)
City of Blue Springs (2)
City of Boisbriand (1)

- City of Gainesville (1)
- City of Galax, VA (1)
- City of Gillette, WY (2)
- City of Glendale Public Art (11)
- City of Gloucester (1)
- City of Goodyear Arts and Culture Division (2)
- City of Grand Junction Commission on Arts & Culture (5)
- City of Grand Prairie, Texas (1)
- City of Grand Rapids, MI (1)
- City of Greeley Art Commission (3)
- City of Greensboro, NC (1)
- City of Greenwood Village, CO (2)
- City of Gulfport, Florida (1)
- City of Hartford, CT (1)
- City of Hayward Mural Art Program (2)
- City of Helena (1)
- City of Henderson (2)
- City of Hoboken, NJ (1)
- City of Indianola, IA (1)
- City of Indio, CA (1)
- City of Inglewood, City Parks and Recreation Dept. & Inglewood Arts Commission (1)
- City of Ithaca Public Art Commission (1)
- City of Johnson City, TN (1)
- City of Kelowna Public Art Collection (2)
- City of Kenmore (1)
- City of Kent (2)
- City of Ketchikan, Alaska (3)
- City of Key West, Art in Public Places (1)
- City of Kirkland (1)
- City of La Canada Flintridge - Public Works Department (1)
- City of La Quinta, CA (2)
- City of Lafayette Art On The Street (3)
- City of Lafayette, CA (1)
- City of Lafayette-West Lafayette (1)
- City of Lake Forest, IL (1)
- City of Lake Oswego, Gallery Without Walls & Permanent Art Collection (53)
- City of Lakewood (1)
- City of Lancaster, CA (1)
- City of Lancaster, Pennsylvania (59)
- City of Largo (1)
- City of Las Vegas Office of Cultural Affairs (46)
- City of Lathrop, CA (2)
- City of Lauderdale (1)
- City of Lemon Grove, CA (1)
- City of Lewiston, ID (1)
- City of Lincoln, NE (1)
- City of Little Rock, AR (5)

- City of Saint George, Utah (1)
- City of Salina (3)
- City of San Diego Public Art Program (4)
- City of San Jose Public Art Program (7)
- City of San Luis Obispo, CA (1)
- City of Santa Clarita (1)
- City of Santa Fe Arts Commission (1)
- City of Santa Monica Cultural Affairs Division (107)
- City of Santa Rosa (3)
- City of Shoreline (3)
- City of Somerville, MA (1)
- City of Sonoma (1)
- City of South Burlington, VT (1)
- City of Springfield Oregon (2)
- City of St. Augustine (1)
- City of St. Louis Park, MN (1)
- City of Steamboat Springs (2)
- City of Stockton Public Art Program (1)
- City of Stuttgart, Germany (1)
- City of Surprise, AZ (14)
- City of Suwanee, GA (3)
- City of Syracuse (2)
- City of Tacoma (5)
- City of Taichung, Taiwan (1)
- City of Tamarac Public Art Program (1)
- City of Tampa (92)
- City of Tempe Public Art (126)
- City of Temple City, CA, Public Art Commission (1)
- City of Toronto (4)
- City of Urbandale, IA (12)
- City of Ventura (96)
- City of Walla Walla (15)
- City of Webster City, Iowa (1)
- City of Westminster, Colorado (73)
- City of White Center, WA (1)
- City of Wichita (2)
- City of Wilmington, DE (1)
- City of Winnipeg Public Art Program (28)
- City of Worthington, OH (1)
- City of Yonkers (1)
- City of York, AL (1)
- City University of New York (CUNY) (1)
- Civic Arts Program, City of Berkeley, CA (1)
- Clackamas County Arts Alliance (2)
- Claremont Redevelopment Agency (1)
- Clark County Department of Aviation (1)
- Clark County, NV (9)

DC Commission on the Arts and Humanities' DC Creates! Public Art Program (6)

deCordova Sculpture Park and Museum (1)

Deerfield High School (1)

Denver Art Museum (1)

Denver International Airport (24)

Denver West Dental Group (1)

Department of Art, The University of North Carolina (1)

Department of Education, City of New York (2)

Department of General Services (2)

Department of Parks, Art, & Recreation, City of Auburn, WA (1)

DePaul University (1)

Deschutes Brewery (1)

Desert Holocaust Committee (1)

Deutsche Bank AG (1)

Devon County Council (1)

Discoteca Demolition Project (1)

Division of Cultural Affairs - Florida Department of State (1)

Doane University (1)

Dogfish Head Craft Brewery (1)

Dollar Bank Three Rivers Arts Festival (1)

Don Lathrop, New Vista Partners (1)

Dona Ana County Government Center (1)

Dormitory Authority - State of New York (1)

Douglas County Art Encounters (1)

Douglas County School District (2)

Downtown Davenport Partnership (4)

Downtown Development Authority of Fort Collins (2)

Downtown Greenway (2)

Downtown Ithaca Alliance (2)

Downtown Memphis Commission (1)

Downtown Partnership of Colorado Springs (2)

Driscoll Clinic (1)

DTC Meridian (1)

Duluth Public Arts Commission, City of Duluth, MN (1)

Dunn + Hobbes, LLC (1)

Eagle Arts Commission (1)

Easley Garden Gallery (1)

East End Arts (1)

East Tennessee Children's Hospital (1)

Edmonton Arts Commission (1)

EnCana Corporation (1)

Equity Office (Seattle, WA) (1)

Eskenazi Health Art Collection (36)

Espy Corporation (1)

Essex County, New Jersey (1)

Estes Park Museum (1)

Evans Street Partners, LLC (1)

- Georgetown University (1)
- Georgia Building Authority (1)
- Georgia Veterans Memorial Park Foundation (2)
- Gerding Edlen (1)
- Gilbert Silverman (2)
- Glasgow Garden Festival (1)
- Glide Economic Development Corporation (1)
- GoggleWorks Center for the Arts (1)
- Gold Hill Mesa Partners LLC (1)
- Golden Ox Restaurant (1)
- Golden Springs Development Company (1)
- Golden Springs Memorial Foundation (1)
- Gonzaga University (2)
- Good With Faces (1)
- Goss Grove Neighborhood Association (1)
- Government of China (1)
- Government of Portugal, Ministry of the Environment (1)
- Gowanus Public Art Project (1)
- Grand Rapids Public Museum (1)
- Granite Properties (8)
- Greater Cleveland Regional Transit Authority (1)
- Greater Greenspoint Redevelopment Authority (2)
- Greater Pittsburgh Arts Council Office of Public Art (1)
- Greene County Public Library (1)
- Greensboro Montessori School (1)
- Greenville-Spartanburg International Airport (3)
- Griffiss Park Landowners Association (1)
- Gustavus Adolphus College (2)
- Gwinnett County (1)
- H.A.A.R.T Oakland (1)
- Haverhill Public Library (1)
- Hawaii State Foundation on Culture and the Arts (392)
- Hawkeye Paving (1)
- Haystack Mountain School of Craft (1)
- Held Properties, Inc. (1)
- Helen Day Art Center (1)
- Henderson Art Project (1)
- Hennepin County Library (3)
- Hennepin Theatre Trust (1)
- Heritage and Cultural Arts Commission, City of Dublin, CA (1)
- Hermann Park Conservancy (1)
- Hermes (1)
- Hilary Zelson (1)
- Hillsboro Arts and Culture Council (1)
- Hillsborough County Florida (1)
- Hillsdale College (1)
- Hillview Medical Center (1)

Jean Friedman, AICP, Peekskill City Hall (1)
Jewish Alliance of Greater Rhode Island (1)
JFKIAT, LLC (4)
Jim & Mary Hirshfield, Summit Family A Washington Foundation (1)
JL Properties, Inc. (1)
John G. Shedd Aquarium (1)
John Hancock Insurance (1)
Johns Hopkins Hospital Art Program (1)
Juneau Public Art (18)
Juneau Public Libraries (1)
Juneau-Douglas City Museum (6)
Ka Leo o Hawai'i (1)
Kah-Nee-Ta Resort & Spa (1)
Kaiser Permanente (7)
Kalamazoo/Battle Creek International Airport (1)
Kamiyama Artist in Residence Program (1)
Kansas City Chiefs Art Program (1)
Kansas City Department of Parks and Recreation (1)
KDJ, Inc., Leonard, TX (1)
Kenosha Community Foundation (1)
Kent Downtown Partnership (1)
Ketchikan Public Library (3)
Kiewit|Sundt Joint Venture (1)
Kilroy Realty Corporation (1)
King County Housing Authority (4)
King County Library System (3)
King County Metro Transit (1)
King County, WA (74)
Kingsport Center for Higher Education (1)
Kirkpatrick Bank (1)
Kissimmee mainstreet (1)
Kitsap County (1)
Kitsap Regional Library (1)
Kochi Health Science Center (1)
Kohl Childrens Museum of Greater Chicago (1)
L.A. Works (2)
La Casa Norte (2)
Laclede's Landing Foundation (1)
Laguna Beach Arts Commission (1)
Lake Forest Country Day School (1)
Lakewood Cultural Center (1)
Land Heritage Institute (1)
Lantern Organization (1)
Laramie Public Art Coalition (1)
Las Trenzas Latina Student and Alumnae Organization of UC Berkeley (1)
Laser Interferometer Gravitational Wave Observatory (LIGO) (1)
Laumeier Sculpture Park (26)

MEDCO; Maryland Economic Development Corporation (1)
Menkes Developments Ltd. (1)
Menorah Park Foundation (1)
Merano Arte (1)
Mercy Housing California (3)
Mesilla Valley Hospice (1)
Metro Arts in Transit, Houston, TX (1)
Metro Nashville Arts Commission (44)
Metro St. Louis Arts in Transit (6)
Metro: Los Angeles County Metropolitan Transportation Authority (3)
Metropolitan Atlanta Rapid Transit Authority (MARTA) (1)
Metropolitan Council (3)
Metropolitan State University of Denver (6)
Metropolitan Washington Airports Authority (1)
MGM Mirage Hotel & Casino (1)
Miami Valley Firefighter/EMS Memorial Association (1)
Miami-Dade County Art In Public Places (7)
Miami-Dade County Parks, Recreation and Open Spaces (1)
Michigan State University (1)
Mid Region Council of Governments (1)
Midtown Alliance (1)
Midtown Exchange (1)
Midwest Medical Center (1)
Milken Community Schools (1)
Millennium Partners (2)
Millicent Rogers Museum (1)
Ministere des affaires culturelles du Quebec (1)
Ministry of Culture, State of Quintana Roo, Mexico (1)
Minneapolis Park and Recreation Board (1)
Minnesota Percent for Art in Public Places (11)
Minnesota Twins (1)
MOA (87)
Mobile Public Art (98)
Montana State University (2)
Montefiore Hospital (1)
Montgomery County Department of Parks (1)
Montgomery County, MD (1)
Montgomery County, Pennsylvania (1)
Montgomery Farm (1)
Montgomery Museum of Fine Arts (1)
Montrose Regional Library District (2)
Moose International, Inc. (2)
Morningside College Eppley Gallery (1)
Morris Thompson Cultural & Visitors Center (1)
Motor Avenue Improvement Association (1)
Mt. Sopris Montessori Preschool (1)
MTA Arts for Transit (25)

- Ocean County Library Commission (1)
- Odessa Council for the Arts & Humanities (1)
- Office for the Arts at Harvard (1)
- Office of Raleigh Arts Public Art Program (2)
- Ogden City Arts (8)
- Ohio Chamber of Commerce (1)
- Ohio Department of Corrections and Rehabilitation (1)
- Ohio Percent for Art Program (5)
- Okanagan-Thompson International Sculpture Symposium (1)
- Oklahoma Art in Public Places (7)
- Oklahoma City Educare (1)
- Omaha Airport Authority (1)
- OMI International Arts Center (1)
- Omnitrans (1)
- One Columbia for Arts and History (1)
- One United Bank (1)
- Ontario Science Centre (1)
- Opus Development (1)
- Oracle Crossings (3)
- Orange County Arts & Cultural Affairs, Florida Public Art (56)
- Oregon Arts Commission (1565)
- Oregon Food Bank (1)
- Oregon Zoo (2)
- Ottawa Little Theatre (1)
- Outlets at Sparks (1)
- Pacific Gas & Electric Company (1)
- Palm Beach County (3)
- Palo Alto Medical Foundation (2)
- Palo Alto Public Art Commission (3)
- Panama Hotel (1)
- Parker Station Professional Office Building (1)
- PASS Museum (1)
- PeaceHealth St. John Medical Center (1)
- PeaceHealth St. Joseph Cancer Center (1)
- Peery Arrillaga (1)
- Peninsula Humane Society & SPCA (3)
- Pennsylvania State University (2)
- Perforce Software (1)
- Phelps Dodge Corporation (1)
- Philadelphia International Airport Art at the Airport (1)
- Philadelphia Redevelopment Authority Percent for Art (1)
- Phoenix Office of Arts and Culture (20)
- Pima County (2)
- Pima Department of Transportation (3)
- Pinellas County Cultural Affairs Public Art & Design Program (1)
- Pinellas Suncoast Transit Authority (PSTA) (1)
- Pinnacle Housing Group (1)

- Riverfront Park Community Foundation (1)
- Robert Wood Johnson University Hospital (1)
- Rochester Museum and Science Center (1)
- Rockland County Art in Public Places, Rockland County, NY (2)
- Roman Catholic Diocese of Tucson (2)
- Rowan University (1)
- RTD art-n-Transit (39)
- Rugby Realty Co., Inc. (1)
- Rutgers, The State University of New Jersey (1)
- Ryan Companies US, Inc. (2)
- Sacramento Regional Transit District (1)
- Sacred Heart School (1)
- Saddleback Church (1)
- Safeco Insurance (2)
- Sagehen Creek Field Station (1)
- Saint Alphonsus Regional Medical Center (1)
- Saint Francis Medical Center (1)
- Saint Joseph Hospital (1)
- San Diego Airport Public Art (31)
- San Francisco Arts Commission (10)
- San Francisco Conservatory of Music (1)
- San Francisco General Hospital (1)
- San Francisco Municipal Transportation Agency (1)
- San Joaquin County, CA (1)
- San Jose Office of Cultural Affairs (1)
- San Juan Islands Sculpture Park (1)
- San Miguel Mission (1)
- Sand Point Arts & Cultural Exchange (1)
- Sanford Center (1)
- Santa Barbara FunkZone Commission (1)
- Santa Clara Valley Medical Center (2)
- Santa Clara Valley Transportation Authority (VTA) (1)
- Santa Cruz California Arts Council (1)
- Santa Cruz City Arts (1)
- Santa Rosa Junior College, The Doyle Collection (1)
- Saturn Building (1)
- Schnitzer West (1)
- Science Center of Iowa (1)
- SciWorks (1)
- SCM Builders (1)
- Scottsdale Public Art (122)
- Scripps Research Institute (2)
- Sculpture at the River Market (1)
- Sculpture Space (1)
- Sealaska Heritage Institute Collection (1)
- Seattle Aquarium (1)
- Seattle Center (2)

State of Illinois Art-in-Architecture Program (3)
State of Nebraska (525)
State of New Jersey (3)
State of New Mexico (662)
State of New York (1)
State of North Carolina (1)
State of Vermont (1)
State of Wisconsin (4)
State of Wyoming, Wyoming State Museum (2)
State University of New York (1)
Stevens Point Sculpture Park (2)
Storefronts Seattle (1)
Stuart Collection at UCSD (18)
Sue Cannon, Founder and Trustee Emeritus of The Museum of Contemporary Art, Denver (1)
Sunnyvale Arts Commission (1)
Sunset Hills and River Rest Cemeteries (1)
Swedish Medical Center (1)
Swimming Western Australia | Beatty Park Leisure Centre (1)
T-Mobile (1)
Taipei City Government (1)
Target Corporation (1)
Tatsuda's IGA (1)
Temple Beth-El (1)
Temple University (2)
Terrebonne General Medical Center (1)
Teton County Library Foundation (1)
Texas State University (1)
Texas Tech University Public Art Program (3)
The Alexander, Indianapolis (49)
The Andy Warhol Museum (1)
The Arts Office, City and District of North Vancouver, BC (1)
The Brickhouse Gallery & Art Complex (1)
The CEMELA Foundation (1)
The City of Aiken and The Center for African American History, Art, and Culture (1)
The City of Dana Point (2)
The City of Manhattan Beach (1)
The College of New Jersey (1)
The Contemporary Austin (1)
The Edwards Group (1)
The Fabrication Yard (1)
The Fields Project, Inc. (1)
The Heinz Endowments (1)
The Housing Authority for the City of Frederick, MD (1)
The Irvine Company (1)
The Italian Cemetery, City of Colma, CA (1)
The Leonardo: A Contemporary Museum for Science & Culture (1)
The Portland Development Commission (1)

- Universiti Brunei Darussalam (1)
- University City Arts & Letters Commission (2)
- University City Swim Club (1)
- University Health System (2)
- University Hospital, Salude-Arte (1)
- University Museums, Iowa State University (40)
- University of Alaska Fairbanks (2)
- University of California (4)
- University of Central Oklahoma (1)
- University of Chicago (1)
- University of Colorado Denver (3)
- University of Denver (5)
- University of Florida (1)
- University of Houston (3)
- University of Iowa (27)
- University of Iowa Art in State Buildings Program (1)
- University of Iowa Hospitals and Clinics (10)
- University of Kansas (1)
- University of La Verne (1)
- University of Memphis (1)
- University of Minnesota, Weisman Art Museum (1)
- University of Mississippi Medical Center (1)
- University of North Texas (1)
- University of Northern Iowa (27)
- University of Oregon (1)
- University of Pittsburgh (1)
- University of South Alabama Mitchell Center Basketball Arena (1)
- University of Southern California (1)
- University of St. Thomas (2)
- University of Texas at San Antonio (UTSA) (2)
- University of Texas, Austin | Landmarks (34)
- University of Utah (1)
- University of Virginia (1)
- University of Washington (1)
- University of Wisconsin (2)
- University of Wyoming Art Museum (9)
- Urban Arts Fund, Denver Arts and Venues (1)
- Urban Culture Project (1)
- Urban League of Broward County (1)
- Urbandale Fire Department (1)
- US General Services Administration (65)
- USGS Headquarters (1)
- Utah Law Enforcement Memorial (1)
- Utah Public Art Program (270)
- Utah Transit Authority Art in Transit (3)
- Valley Metro (8)
- Vermont Arts Council (1)

ZKM | Zentrum für Kunst und Medientechnologie Karlsruhe (1)

Zoo Baise (1)

Follow Us

Hello BOLD Team,

As we come into the homestretch of the BOLD Summer Nights Events, we wanted to let you know that at the BOLD Standing Meeting this coming Monday, August 28, we will hold an after-event discussion to identify challenges and key issues that went well and those that can be improved upon to enhance the success of future BOLD programs.

Attached is an After Event Action Report Survey that will be available at the meeting as well as online. We are asking all city staff that were involved with the BOLD Summer Nights events to complete the survey at your earliest convenience.

As a member of the BOLD Team, your thoughts and those of your staff are extremely valuable and very much encouraged. Please feel free as appropriate to send the attached survey to others in your department.

Additionally, the meeting on Monday will include on-going review of logistics for the upcoming Next Night event scheduled for September 23rd.

We look forward to seeing you on Monday!

Regards,

Huma Ahmed and Robin Chancellor